



University of St Andrews  
*Scotland's first university*

600 YEARS  
1413 – 2013

# Medicine

## Postgraduate Study 2011 Entry





# Medicine

The University has undertaken one of the most ambitious projects in international medical teaching and research, with the construction of a new medical school at the heart of its science campus. This is a unique model designed to foster interdisciplinary collaboration and create significant advances in medical research.

This facilitates interdisciplinary collaboration with the University's top rated science faculty, acknowledging the growing international consensus that the most significant advances in medical and biomedical research will result from unrestricted collaboration between medicine and the sciences.

With fifteen active research groups, the School of Medicine offers postgraduate training for the degrees of MSc, MPhil, MRes, PhD and MD, in addition to providing undergraduate training for the BSc (Hons) in Medicine. PhD positions are advertised on a regular basis on the School website (<http://medicine.st-andrews.ac.uk>). We have active research programmes covering a variety of areas of biomedical science. For example:

- Human carcinogenesis and cancer predisposition
- Interdisciplinary Centre for Medical Photonics
- Influence of diet on cancer risk and response to therapy
- Papillomaviruses and human cancer
- The immune system and inflammatory arthritis
- Psychological aspects of oral cancer
- Communication between patients and health care staff
- Molecular mechanisms of exocytosis
- Inflammatory airway disease and medical education
- Violence reduction and policy initiatives to improve health and reduce health inequalities
- Understanding HIV virus particle production
- Receptor pharmacology and signal transduction.

For general information about the research activity of the School see <http://medicine.st-andrews.ac.uk> The Pro Dean (Postgraduate) will be happy to assist you if you are unsure about your choice of course or entry requirements.

*“There is a real sense of a community amongst the researchers here and everyone is willing to help if problems arise. Through my studies I have learned many new laboratory skills as well as generic skills offered through the University’s GRADskills programme. St Andrews is a great place to study and relax.”*

**CHRIS**  
**From Glasgow**  
**Current PhD student**



Prior to the offer of a place you may be invited to visit St Andrews. A visit to the University will provide the opportunity to meet potential supervisors (each postgraduate student works under the supervision of a member of staff), discuss your research project, and see something of the facilities available to research students.

Once Postgraduate Admissions has made an offer of a place and this has been accepted, arrangements will be made for you to be registered for the appropriate degree.

## Degrees Available

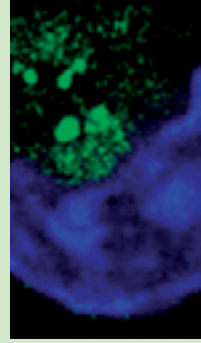
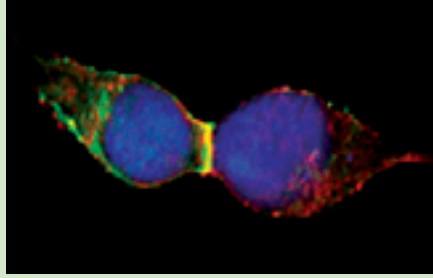
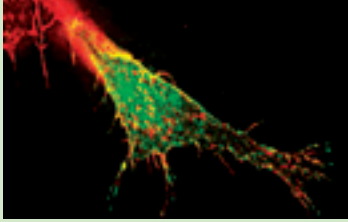
### MSc in Health Psychology

This is a one-year programme consisting of six taught modules and a research project, with the opportunity for placements in clinical settings. The MSc is taught jointly with the School of Psychology, in collaboration with NHS Fife. The award of the MSc provides the recognised Stage 1 training for British Psychological Society (BPS), Health Psychology Chartership (accreditation pending); however, applicants must have, or be eligible for, Graduate Basis of Registration with the BPS. The course covers all topics required in the recommended curriculum, utilising a variety of novel methods of teaching and assessment.

### MRes in Medicine

This is an exciting new one-year programme to be offered by the Medical School. By the end of the programme you will have developed advanced level skills, conceptual understanding and knowledge of medical research and its ethical implications, gained experience in research methods, critical evaluation and management at the forefront of medical research, gained a range of transferable key skills (including effective communication, use of information sources, planning and organisation, working independently and in a team, problem solving and original thinking) enabling you to work in a wide variety of careers at senior levels in circumstances requiring judgement, personal responsibility and initiative.

The course consists of three modules: *Recent Advances in Medical Research* – a series of masterclasses and journal clubs in specialised areas of medical research. *Training in Research Skills* – a training course in wider research skills such as how to do research in a



health service setting and how to write a successful grant application. *Research Project in Medicine* – the opportunity to join a research team within the medical school and work on one project for a year. A research project report of 12-15,000 words will form the main assessment of this module. For entry to the programme, normally at least a 2.1 degree will be expected.

## PhD

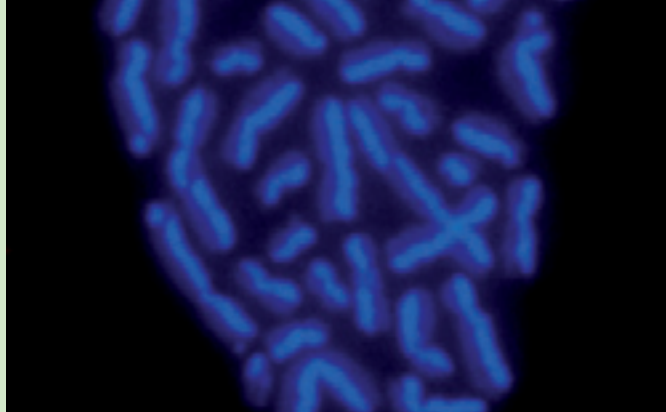
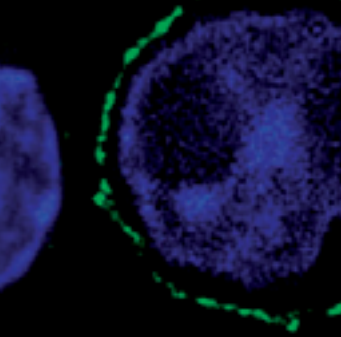
For most students, the PhD is a three-year programme of supervised research, examined by thesis. The thesis is normally submitted by the end of the third year and is a piece of original work describing the research undertaken and its implications for present knowledge.

During the first year of study the School may require your attendance on particular courses in order to acquire specific skills or knowledge, as appropriate to your area of study. The PhD degree may also be awarded through submission of a portfolio of published work, which must all be in the public domain at the time of submission. Examination of a PhD by portfolio is essentially similar to that of a PhD by thesis.

## MD

In 2003 the Scottish Parliament reinstated the right of St Andrews to offer a Doctorate in Medicine (MD) degree to candidates holding a recognised medical qualification. Candidates must have some connection with St Andrews as either graduates in Medicine or Medical Science from this University, or members of academic staff or employees of the NHS in the Lothians, Fife or Tayside having a working relationship with St Andrews. The MD may be awarded as a result of research undertaken in St Andrews, for appropriately qualified candidates. An MD may also be achieved through submission of a portfolio of published work, all of which must be in the public domain.

The minimum period of study on a full-time research project is two years, or four years for part-time study.



## Application Process

For further information and an online application form please see the Postgraduate Admissions web pages [www.st-andrews.ac.uk/admissions/pg](http://www.st-andrews.ac.uk/admissions/pg)

## GRADskills – enhancing researchers’ skills and employability

PhD and MPhil research students at St Andrews have access to GRADskills, an extensive and award-winning generic skills development programme for early stage researchers. It aims to support doctoral students and research staff in developing transferable skills to enhance their research capabilities and improve their future employability. The design of GRADskills has taken account of recommendations from the UK Research Councils, as well as current postgraduates, postdoctoral fellows and academic supervisors. Skills’ categories included are Research Management, Research Skills & Techniques, Research Environment, Communication Skills, Networking and Team Building, Personal Effectiveness and Career Management.

The high quality of the programme – which won the Times Higher Education Award 2007/8 for “Outstanding Support for Early Career Researchers” – is maintained by using a wide range of trainers, consultants and other professionals to provide a wide range of courses, workshops, symposia, conferences, study visits and other events. Development of skills is further enhanced by the use of Development Needs Analysis and a Postgraduate Logbook as personal development planning tools. Participation in GRADskills also enables postgraduates to take advantage of additional opportunities offered in collaboration with “Vitae” and other external organisations. Further details of the GRADskills programme are available at: [www.st-andrews.ac.uk/gradskills](http://www.st-andrews.ac.uk/gradskills)



Artist's impression of the new medical building



## Academic Staff

(Email addresses (in brackets) should be followed by @st-andrews.ac.uk)

Professor Peter Donnelly (pdd21)

Professor Simon Guild (sbg)

Professor C Simon Herrington (csh2)

Professor Gerry Humphris (gmh4)

Professor Cathy Jackson (cj21)

Professor Lindsey Kent (lks8)

Professor R Hugh MacDougall (medical.dean)

Professor Andrew C Riches (acr1)

Dr Catherine Adamson (csa21)

Dr Jim F Aiton (jfa)

Dr Predrag Bjelogrić (pb10)

Dr Joanna Cecil (jc100)

Dr Gordon Cramb (gc)

Dr Maureen Crosby (mec3)

Dr Ruth Cruickshank (rc24)

Dr Rachel Davies (rcd21)

Dr Winnie Dhaliwal (wd21)

Dr Amanda Fleet (af2)

Dr Jon Issberner (jpi)

Dr Anita Laidlaw (ahl1)

Dr Colin J M Nicol (cjmn)

Dr Gozde Ozakinci (go10)

Dr Jo Parish (jlp10)

Dr Simon Powis (sjp10)

Mr James Robb (jr50)

Dr Paul Reynolds (par10)

Dr David W Sinclair (dws1)

Dr Elizabeth M Sinclair (ems1)

Dr Alan Stewart (ajs21)

Ms Gillian E Strugnell (ges)

Dr Keith Taylor (kct1)

Dr Susie C Whiten (sw1)

Dr Andrew Wood (aw104)

For full details and research interests see: <http://medicine.st-andrews.ac.uk>

## The School of Medicine

Postgraduate Convenor, University of St Andrews, Medical School,  
North Haugh, St Andrews, Fife KY16 9TF, Scotland, UK

T: +44 (0)1334 463601

F: +44 (0)1334 467470

E: [pgmed@st-andrews.ac.uk](mailto:pgmed@st-andrews.ac.uk)

W: <http://medicine.st-and.ac.uk/studentsPostgrad.aspx>

## Postgraduate Recruitment & Admissions

University of St Andrews, St Katharine's West,  
16 The Scores, St Andrews, Fife KY16 9AX, Scotland, UK

T: +44 (0)1334 463325

F: +44 (0)1334 463330

E: [pgrecruitment@st-andrews.ac.uk](mailto:pgrecruitment@st-andrews.ac.uk)

## Online Prospectus, Subject Leaflets and Admissions information:

[www.st-andrews.ac.uk/admissions/pg](http://www.st-andrews.ac.uk/admissions/pg)

## Visiting Days

There will be two Visiting Days, 17 November 2010 and 23 March 2011, when you can look round the University and talk informally to staff about courses. Booking for these events is essential. For more information see the prospectus or:

[www.st-andrews.ac.uk/admissions/pg/Postgraduatevisits](http://www.st-andrews.ac.uk/admissions/pg/Postgraduatevisits)



University of  
St Andrews

The University's Terms and Conditions for matriculated students can be found in the PG Sponsio Academica at: [www.st-andrews.ac.uk/pgstudents/rules](http://www.st-andrews.ac.uk/pgstudents/rules) as can the Policies for both Taught and Research Postgraduates.

Produced by Print & Design, University of St Andrews. August 2010.  
The editorial and design team at the University of St Andrews thank all contributors.  
Photographs by: Peter Adamson, broad daylight and Rhona Rutherford.

The University of St Andrews is a charity registered in Scotland. No: SC013532

[www.st-andrews.ac.uk](http://www.st-andrews.ac.uk)